

Children in Care at the month end

	2008	2009	2010	2011	2012prov	2013 pro	Apr-11	May-11	Jun-11	Jul-11	Aug-11	Sep-11	Oct-11	Nov-11	Dec-11	Jan-12	Feb-12	Mar-12	Apr-12	May-12	Jun-12
Total children in care at 31st March	197	222	229	212	243	242	218	218	208	209	220	218	235	243	241	239	241	243	242	243	247
Thurrock UASC			16	14	24	26	19	17	16	16	21	21	25	24	22	23	25	24	26	27	29
Thurrock other	197	222	213	198	219	216	199	201	192	193	199	197	210	219	219	216	216	219	216	216	218
Thurrock (per 10,000)	57	61	63	57	66	65	58	58	56	56	59	58	63	65	64	64	64	65	65	65	66
England (per 10,000)	54	55	58	59																	
Statistical neighbours (per 10,000)	55	58	62	63																	

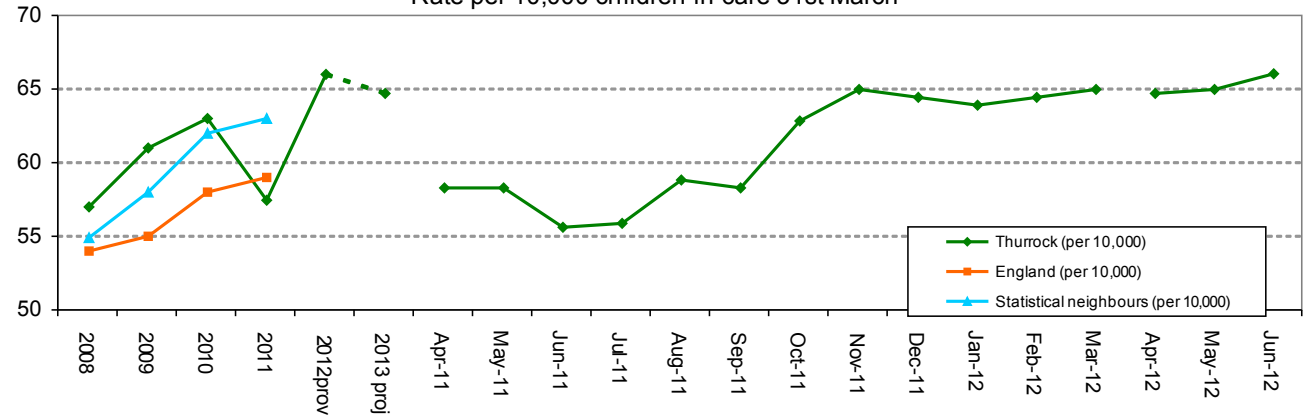
Performance Comments:

The number of children in care has risen significantly in 2012 and is the highest it has ever been in Thurrock. The rate per 10,000 has increased to 66 (calculated from an estimated population of 37,400) which is 3 above the 2012/13 target and 7 above the national figure in 2011. Based on 2011 results, this would still place Thurrock within the middle quartile ranges nationally.

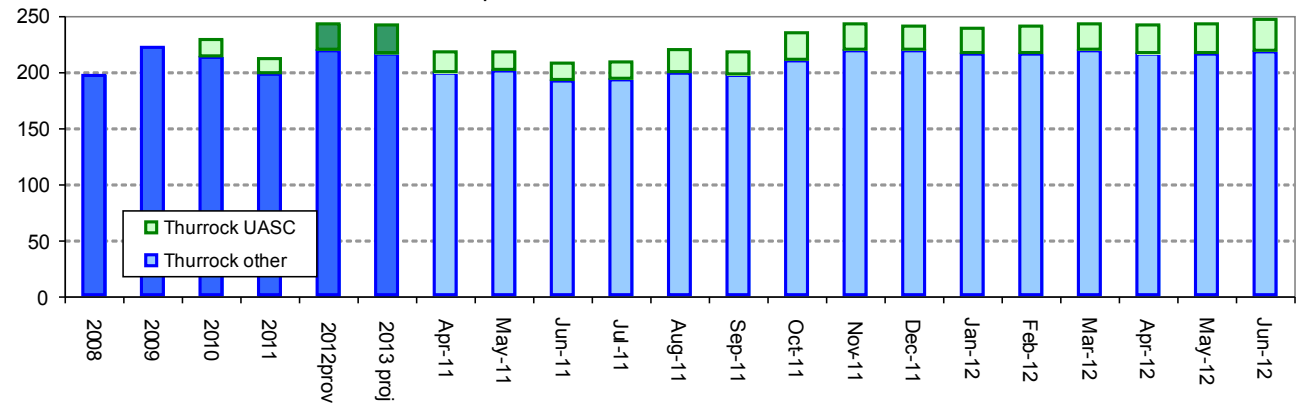
Service Comments:

The majority of new entrants to the system are children in care proceedings, and this reflects a wider national trend reported by CAFCASS, which indicates a 10% rise in new proceedings over the last year. This continues to be the national trend. It is also a view that the current economic climate is likely to be a contributory factor along with the fact that there are a number of cases where Social Care have been involved over a number of years with the outcome being care proceedings and removal of the children into local authority care. Given the anticipated increase in the child population over the next few years it is unlikely we will be able to significantly reduce the overall LAC population, unless the E.O.H. can divert a significant number of families at an early stage.

Rate per 10,000 children in care 31st March



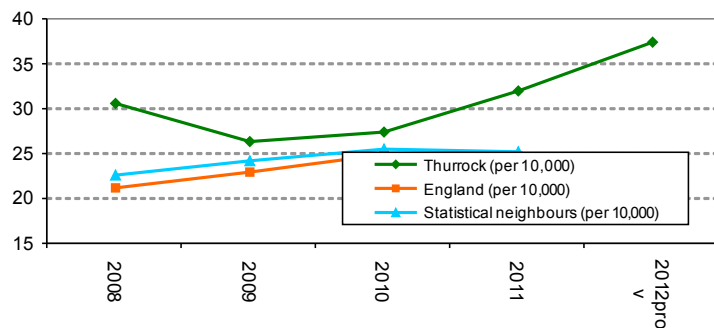
Number per 10,000 children in care 31st March



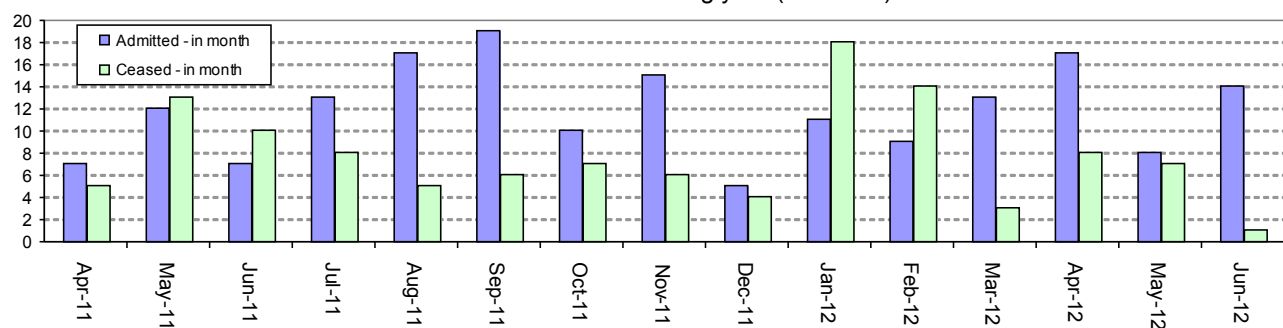
Children admitted to and ceasing care during the year

	2008	2009	2010	2011	2012pro	2013 pro	Apr-11	May-11	Jun-11	Jul-11	Aug-11	Sep-11	Oct-11	Nov-11	Dec-11	Jan-12	Feb-12	Mar-12	Apr-12	May-12	Jun-12
Admitted (year to date)	104	95	101	118	138	204	7	19	26	39	56	75	85	100	105	116	125	138	17	25	39
Admitted - in month							7	12	7	13	17	19	10	15	5	11	9	13	17	8	14
Thurrock (per 10,000)	30.6	26.3	27.4	32.0	37.4	54.5															
England (per 10,000)	21.2	22.9	24.9	24.7																	
Statistical neighbours (per 10,000)	22.6	24.2	25.5	25.2																	
Ceased (year to date)	97	81	93	140	99	96	5	18	28	36	41	47	54	60	64	82	96	99	8	15	16
Ceased - in month							5	13	10	8	5	6	7	6	4	18	14	3	8	7	1
Thurrock (per 10,000)	26.4	22.2	26.0	37.4	26.8	25.7															
England (per 10,000)	22.2	22.3	22.5	24.3																	
Statistical neighbours (per 10,000)	22.6	22.1	22.2	24.5																	

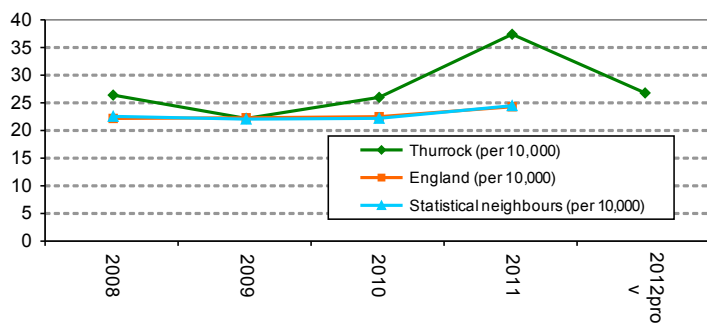
Rate per 10,000 children admitted to care during year



Children admitted to care during year (numbers)



Rate per 10,000 children ceased to care during year



Performance Comments:

The number of children admitted to care in 2012 is 138 which is 20 children higher than 2011 (a 17% increase). The rate per 10,000 has increased to 37.4 (calculated from an estimated population of 36,900) which is 5.4 higher than in 2011 and 13.3 higher than the 2011 national figure. Based on 2011 results, this would place Thurrock in the bottom quartile. However, the rate of children ceasing care is currently 26.8 which is 2.5 above the 2011 national figure (10% higher) despite there being significantly less children ceasing care than in 2011 (around 30% less).

Service Comments:

The relationship between admissions and endings correlated with the overall rise in young people looked after. There has been a significant increase in the number of UASC admitted, compared to June 2011 and the number of children placed with family members under the Family & Friends Care arrangements has had an impact in this performance outcome. (Formal family & friends arrangements vs Informal family & friends arrangements - further exploration of this is required). Alongside this is the legislative framework (ie Judicial Reviews & High Court Judgements)

NI 62 Stability of placements 3 or more placements in year

	2008	2009	2010	2011	2012prov	2013 pro	Apr-11	May-11	Jun-11	Jul-11	Aug-11	Sep-11	Oct-11	Nov-11	Dec-11	Jan-12	Feb-12	Mar-12	Apr-12	May-12	Jun-12	
Total 2							16	19	23	28	30	26	33	38	36	39	42	50	14	21	33	
Total 3							0	0	0	1	6	4	9	9	10	13	14	10	0	1	1	
Total 4							0	0	0	0	0	0	1	0	3	6	6	6	0	0	1	
Total 5							0	0	0	0	0	0	1	1	1	1	1	3	0	0	0	
Total 6							0	0	0	0	0	0	0	0	0	0	2	2	0	0	0	
Total 3+	33	21	29	19	22	0	0	0	0	1	6	4	11	10	14	20	24	22	0	1	2	
Total CiC	205	220	235	210	243	242	218	218	208	209	220	218	235	243	241	239	241	243	242	243	247	
Thurrock (% 3+)	15.9	9.6	12.4	9.0	9.1	0.0	0.0	0.0	0.0	0.5	2.7	1.8	4.7	4.1	5.8	8.4	10.0	9.1	0.0	0.4	0.8	
England (% 3+)	11.8	11.1	11.3	10.7																		
Statistical neighbours (% 3+)	12.5	10.9	10.8	10.0																		

Performance Comments:

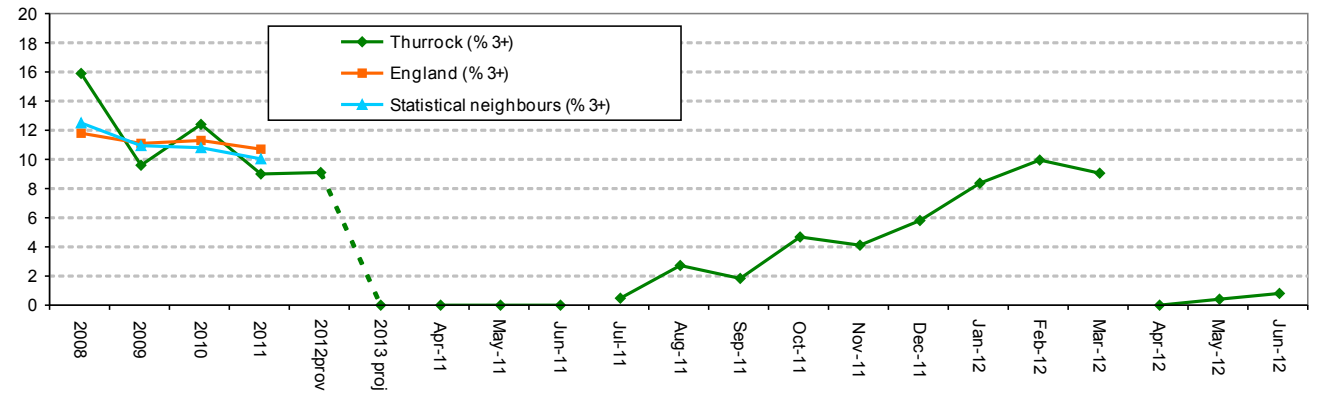
Note - Amended 2007-2011 data with nationally published figures This has significantly reduced the 2011 % 3+ for Thurrock which appeared to be incorrect (08/05/12),

The percentage of 3 or more placements within the year has remained stable at 9.1%. This is 0.1% higher than in 2011 but is 1.6% lower than the 2011 national average. Thurrock would remain in the second quartile nationally based on 2011 figures.

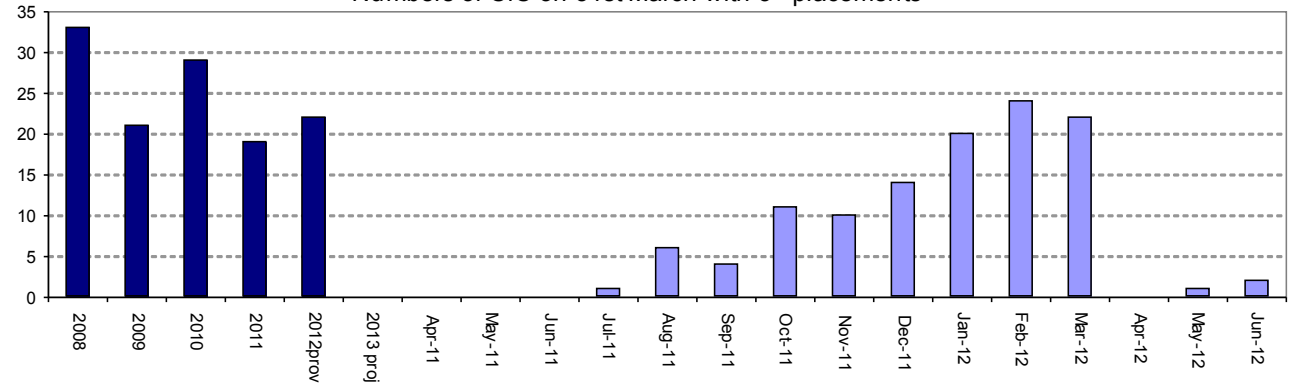
Service Comments:

Despite the increase in looked after children overall placement stability, measured by this indicator suggests we are managing to contain placement moves reasonably well. This is a credit to the work of Social Workers and Foster Carers, although we need to remain vigilant about the care trajectories of the young people at risk of potential disruption. Early in the year a relatively low number of children had reached the 3 placement threshold, although the number of children/young people already on 2 placements was increasing, the Department will need to monitor this over the coming months.

% of CiC on 31st March who have had 3 or more placements in year



Numbers of CiC on 31st March with 3+ placements



NI 63 Long term stability CiC - Children who have been in care for 2.5+ yrs and have been in placement for 2 yrs

	2008	2009	2010	2011	2012prov	2013 pro	Apr-11	May-11	Jun-11	Jul-11	Aug-11	Sep-11	Oct-11	Nov-11	Dec-11	Jan-12	Feb-12	Mar-12	Apr-12	May-12	Jun-12
Total care 2.5+ yrs	70	60	65	55	69	67	71	78	75	73	75	81	85	88	87	73	74	69	67	71	70
Care 2.5+ - placement less than 2 yrs	20	20	20	20	19	23	21	27	25	24	22	26	27	23	20	19	21	19	23	25	27
Care 2.5+ - placement 2+ yrs	50	40	45	35	50	44	50	51	50	49	53	55	58	65	67	54	53	50	44	46	43

Thurrock (% 2+ yrs)	72.1	65.0	70.1	59.6	72.5	65.7	70.4	65.4	66.7	67.1	70.7	67.9	68.2	73.9	77.0	74.0	71.6	72.5	65.7	64.8	61.4
England (% 2+ yrs)	65.0	66.2	67.4	68.6																	
Statistical neighbours (% 2+ yrs)	66.9	66.7	68.2	68.1																	

Performance Comments:

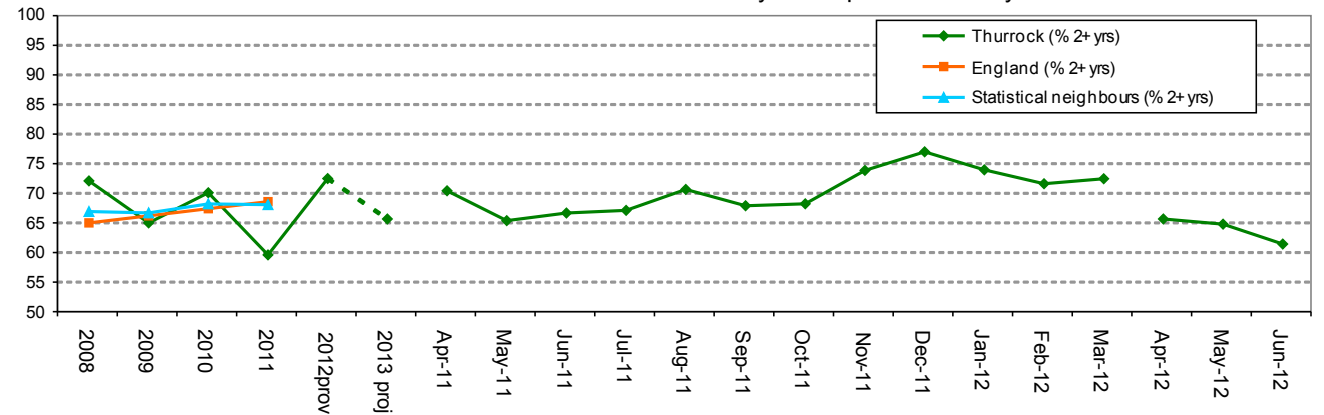
Note - Amended 2007-2011 data with nationally published figures This has made only minor changes to the 2009 data (08/05/12),

The long term stability of children in care has increased in 2012 and is now 72.5%. This is the highest it has been for the past 6yrs and a significant increase from 2011 (3.9% above the 2011 national figure). Thurrock would move in the second quartile from the fourth quartile based on 2011 national figures.

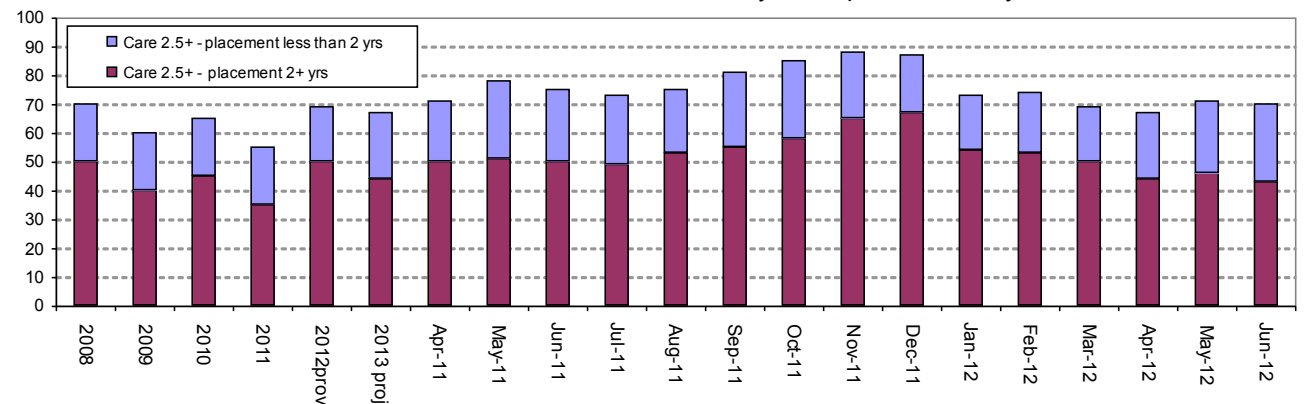
Service Comments:

Despite the increase in looked after children overall placement stability, measured by this indicator suggests we are managing to contain placement moves reasonably well. This is a credit to the work of Social Workers and Foster Carers, although we need to remain vigilant about the care trajectories of the young people at risk of potential disruption. At this stage of the year the indicator suggest some deterioration in performance. Particular monitoring required through the role of the IRO and core groups to be established in order to ensure all steps are taken to prevent possible placement breakdown with this cohort (RFM & PC to action)

% of CiC on 31st March been in care 2.5+ yrs and placement 2+ yrs



Number CiC on 31st March been in care 2.5+ yrs and placement 2+ yrs



NI 66 Proxy - Reviews due in month and current status (ie in time, out of time or not completed)

	2008	2009	2010	2011 pro	2012pro	2013 pro	Apr-11	May-11	Jun-11	Jul-11	Aug-11	Sep-11	Oct-11	Nov-11	Dec-11	Jan-12	Feb-12	Mar-12	Apr-12	May-12	Jun-12	
Reviews due in month (s)	176	211	218	207	228	159	31	41	37	23	35	37	51	56	44	49	24	72	50	68	41	
Reviews - in time	169	185	184	199	228	146	31	41	37	23	35	37	51	56	44	49	24	72	50	65	31	
Reviews - out of time	7	26	34	8	8	0	0	0	0	0	0	0	0	0	0	0	0	0	0	0	0	0
Reviews - no date shown						13	0	0	0	0	0	0	0	0	0	0	0	0	0	3	10	
Thurrock (% reviews on time)	96.0	87.7	84.4	96.1	100.0	91.8	100.0	100.0	100.0	100.0	100.0	100.0	100.0	100.0	100.0	100.0	100.0	100.0	100.0	95.6	75.6	
England (% reviews on time)	90.0	90.9	90.5																			
Statistical neighbours (% reviews on time)	89.2	91.5	90.6																			

Note:

This counts the number of CHILDREN who have reviews due NOT Families. The yearly totals are based on the number of children who had reviews and not the total number of reviews that took place in the period. If a review is late then that child is considered late for the entire year.

Dates are only shown on the system when the review is complete therefore those with no date are not complete on system but may have taken place.

Performance Comments:

Note that 2011 national comparative data has been delayed. This will be updated when it becomes available.

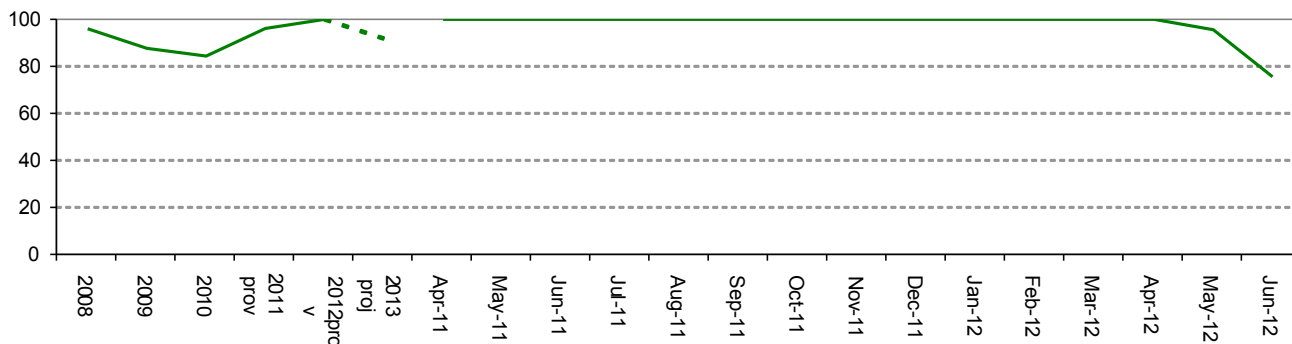
* Data has been updated for all months in 2011/12. Submitted data for 2012 will show 100% reviews in time.

Performance has declined from 2008 where Thurrock was ranked in the 2nd quartile nationally to the 4th quartile in 2010 (published 2011 national data not yet available). Current benchmarked data shows Thurrock ranked 128/152 (2010). Provisional data indicates that performance improved in 2011 and further improved in 2012. Thurrock will be the top local authority nationally for 2012 with 100% of the reviews taking place in time.

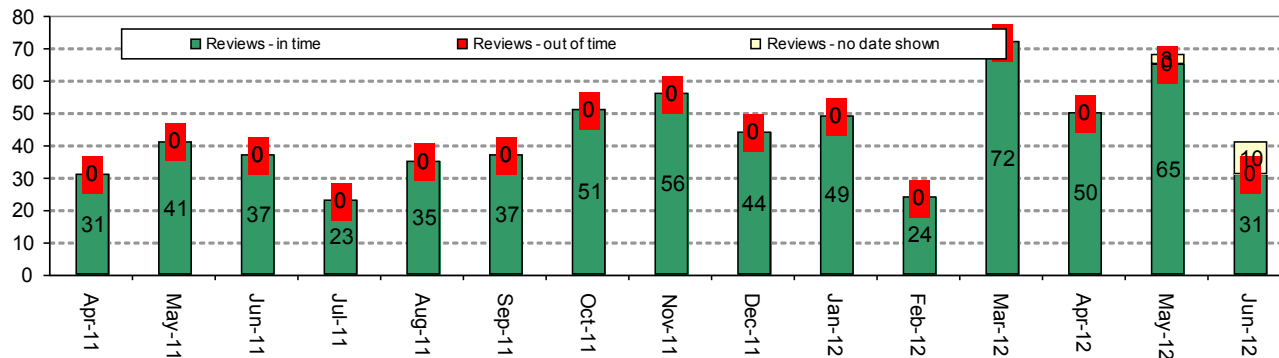
Service Comments:

For quarter one 2012-13 the reported review completion is 75%. However this excludes 10 reviews from the 41 undertaken that do not at the time of reporting have a completion date. It is probable that the review has been undertaken but shows a lag on data entry to ICS. This continues to be targeted through joint work by the reviews team and the performance team.

% of CiC reviews due in month that are recorded as 'on time'



Of the reviews due in each month - Number 'in time', 'out of time' and 'no date'



NI 147 - Care leavers in suitable accommodation, NI 148 Care leavers in Employment, education or training (EET)

	2008	2009	2010	2011 pro	2012 pro	2013 pro	Apr-11	May-11	Jun-11	Jul-11	Aug-11	Sep-11	Oct-11	Nov-11	Dec-11	Jan-12	Feb-12	Mar-12	Apr-12	May-12	Jun-12
Total Care leavers		17	20	29	29		29	29	29	29	29	29	29	29	28	28	29	29	30	30	30
In suitable accommodation		15	20	24	22		0	0	0	9	9	9	0	0	21	0	22	22	8	10	11
<i>not suitable</i>		2	0	4	5		0	0	0	0	0	0	0	0	3	0	5	5	1	1	1
<i>Not recorded</i>					2		0	0	0	20	20	20	0	0	5	0	2	2	21	19	18
In EET		9	11	12	11		0	0	0	2	2	2	0	0	8	0	11	11	4	4	4
<i>not EET</i>		8	9	16	18																
<i>F1 - Young person engaged full time in higher</i>							0	0	0	0	0	0	0	0	3	0	4	4	0	0	0
<i>F2 - Young person in full time education other than</i>							0	0	0	2	2	2	0	0	3	0	4	4	4	4	4
<i>F3 - Young person in full time training or employment</i>							0	0	0	0	0	0	0	0	2	0	3	3	0	0	0
<i>G4 - Young person NEET - illness</i>							0	0	0	1	1	1	0	0	2	0	2	2	0	0	0
<i>G5 - Young person NEET - Other</i>							0	0	0	6	6	6	0	0	12	0	12	12	4	6	7
<i>Not Recorded</i>							0	0	0	20	20	20	0	0	5	0	2	2	21	19	18
<i>P2 - Young person in part time education other than higher education</i>							0	0	0	0	0	0	0	0	2	0	2	2	0	0	0
<i>P3 - Young person in part time training or employment</i>							0	0	0	0	0	0	0	0	0	0	0	0	1	1	1
Thurrock (% suitable acc)	85.7	88.2	100.0	86.0	75.9		0.0	0.0	0.0	31.0	31.0	31.0	0.0	0.0	75.0	0.0	75.9	75.9	26.7	33.3	36.7
<i>England (% suitable acc)</i>	88.4	89.6	90.3	90.0																	
<i>Statistical neighbours (% suitable acc)</i>	87.3	89.8	87.4	84.5																	
Thurrock (% EET)	71.4	52.9	55.0	43.0	41.4		0.0	0.0	0.0	20.7	20.7	20.7	0.0	0.0	42.9	0.0	41.4	41.4	13.3	20.0	23.3
<i>England (% EET)</i>	64.9	63.0	62.1	61.0																	
<i>Statistical neighbours (% EET)</i>	60.6	52.0	54.8	56.7																	

Performance Comments:

The percentage of care leavers in suitable accommodation dropped in 2011 and placed Thurrock in the 4th quartile (113/142 LAs). There has been a further 10% decline in 2012 which could place Thurrock near/ at the bottom of the 4th quartile.

The percentage of care leavers in employment, education or training dropped in 2011 placing Thurrock 129th out of 140 authorities. There has been a further decline of around 1.5% in 2012 which would keep Thurrock at the bottom of the 4th quartile based on 2011 national performance.

Service Comments:

NI147 Care Leavers in Suitable Accommodation

The Department is aware of the low performance of this indicator, but is also aware that there maybe a recording issue. For example 2 of the young people deemed as living in unsuitable accommodation have been removed from the country. We have an identified Housing Worker within the After Care Team who works closely with the Housing Department and other key partners.

Out of the 30 young people this refers to 13 young people have had their information recorded, with a further 2 to be recorded imminently. The other 15 young people are still 18 years of age and will be recorded on or around their 19th birthday. Of the 15, 6 are due to be 19 between now and December 2012, a further 6 by the end of January 2013 and 3 by the end of March 2013. This also applies to the performance indicator N148

NI148 Care Leavers in EET

This performance is low, which also correlates with the findings of the JSNA about the aspirations of our young people. We are trying to address this in creative ways such as a tailored project that will support young people in developing their basic skills in order to increase their confidence and aspirations but to also prepare them for work.

